



Belton Way, London, E3

BUTLER & STAG



**Offered to the market is this beautifully presented and well-proportioned two-bedroom apartment, ideally situated in Bow. Set within a purpose built development on Belton Way, this bright and spacious home boasts contemporary interiors and the rare benefit of sole use of a large, wrap around south-facing garden.**



## Leasehold

- Ground Floor Garden Apartment
- Private 180-Degree South Facing Garden
- Separate Kitchen
- Furze Green and Mile End Park Close By
- Two Double Bedrooms
- 602 Sq/Ft Internal Living Space
- Chain Free
- Langdon Park DLR & Bromley By Bow Tube Stations Close By

Internally, the apartment comprises a generous living and dining area, complemented by large windows and a door leading to a private south facing garden creating a fantastic extension to the main living area. Separate kitchen which is fully fitted, two well-sized double bedrooms offer ample storage, while the modern bathroom is finished to a high standard.

The real standout feature of this home is the substantial private garden – perfect for entertaining or al fresco dining in total privacy.

Belton Way is well-located for Mile End Ecology Park and it's more famous neighbour, Victoria Park, which is easily accessible. Several transport links are nearby giving easy access into Canary Wharf, the City and West End. The nearest underground station is Mile End (Central, District and Hammersmith & City).

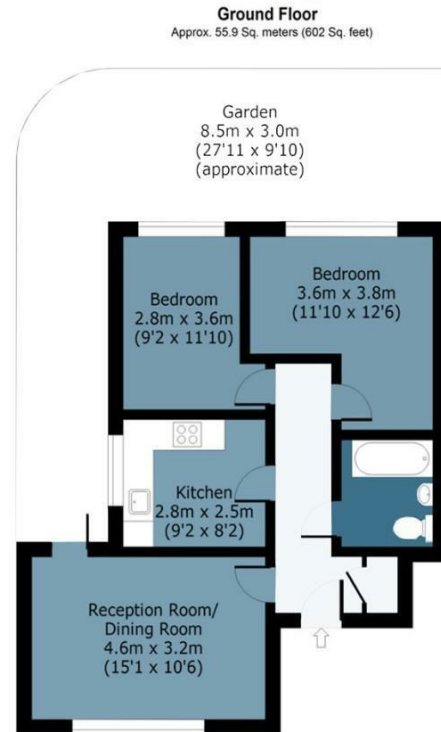




## Belton Way

Approx. Gross Internal 55.9 Area Sq M ( 602 Sq Ft )

BUTLER & STAG



Measurements are approximate and for illustration purposes only. While we do not doubt the accuracy and completeness, we advise you conduct a careful independent assessment of the property to determine monetary value.  
© @modephoto.uk www.modephoto.co.uk

BUTLER & STAG

☎ 020 8102 1236

🏠 508 Roman Road, Bow, London, E3 5LU

✉ bow@butlerandstag.com

[www.butlerandstag.uk](http://www.butlerandstag.uk)

IMPORTANT NOTICE - These particulars have been prepared in good faith and they are not intended to constitute part of an offer or contract. We have not performed a structural survey on this property and the services, appliances and specific fittings have not been tested. All photographs, measurements, floor plans and distances referred to are given as a guide and should not be relied upon.